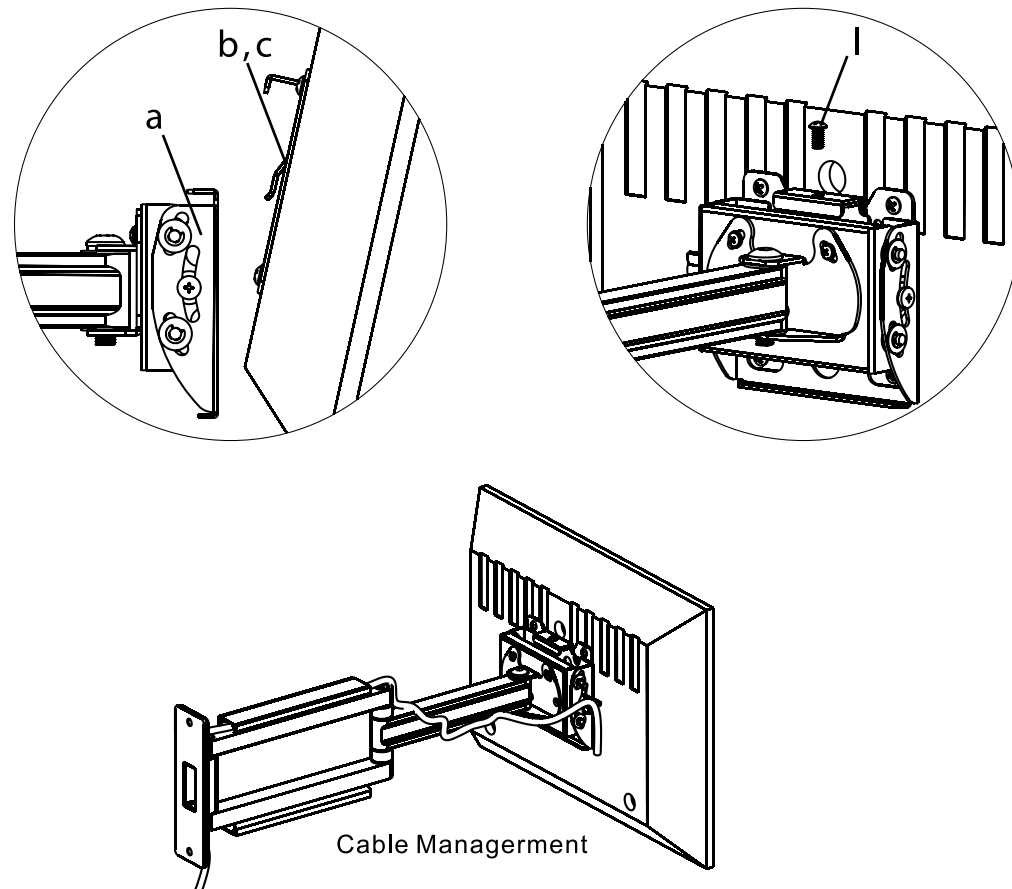


Step 3: Attach TV to the Wall Plate



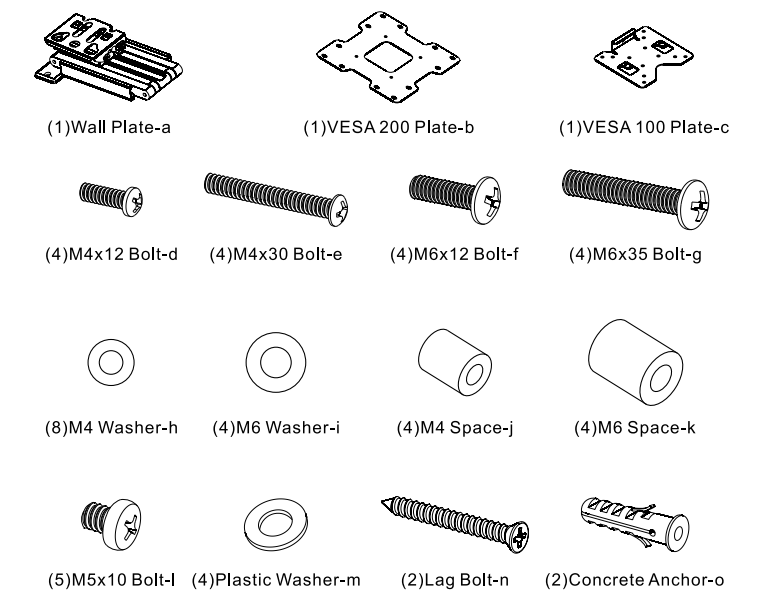
Thank you for choosing Kanto AV Systems flat panel wall mount. The KMLCD1937B is designed to mount flat panel televisions weighing 77lbs (35kg). This mount will tilt your TV $\pm 15^\circ$ and swivel (pan) left and right without the use of tools. You can also fine tune the horizontal by rotating the mount 2° after the mount is fixed to the wall using the three screws on the rear most point of the TV plate.

Read these instructions fully before installation of this mount. If you do not understand these directions, or have any doubts about the safety of the installation, please consult a qualified installation contractor to install this mount. Make sure there are no defective or missing parts. Do not use defective parts. If you are uncertain if the part is defective call Kanto AV Systems directly at 1-(888) 848-2643. Kanto AV Systems can not be liable for property damage or injury caused by incorrect mounting, incorrect assembly, lifting or incorrect use of this product.

This product should NOT be mounted on steel stud walls or old cinder block walls. Consult a qualified installation contractor if you are unsure about the type of wall you may have. We make every effort to assure all necessary hardware is included. If there is hardware missing please call Kanto AV Systems directly at 1-(888) 848-2643.

Required Tools: 1/8" wood drill bit, 5/16" masonry bit for brick or concrete block installations, Phillips screwdriver.

Supplied Parts and Hardware



WARNING

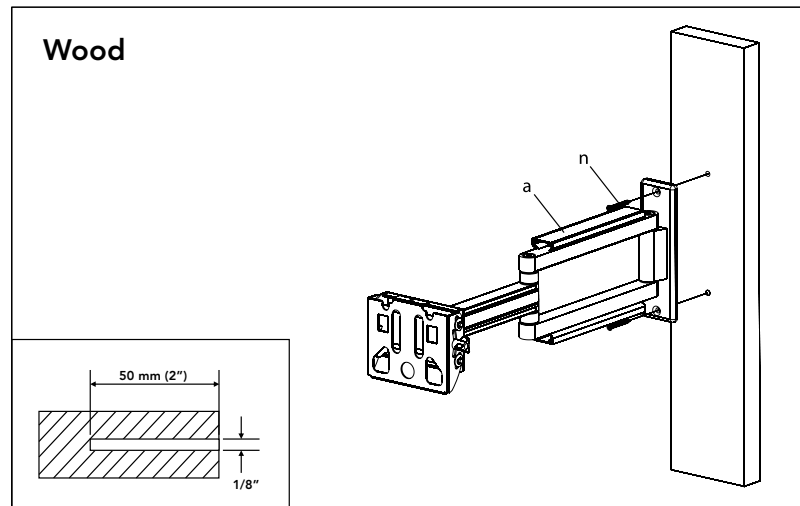
Use two people to lift and position the TV onto the Wall Plate.



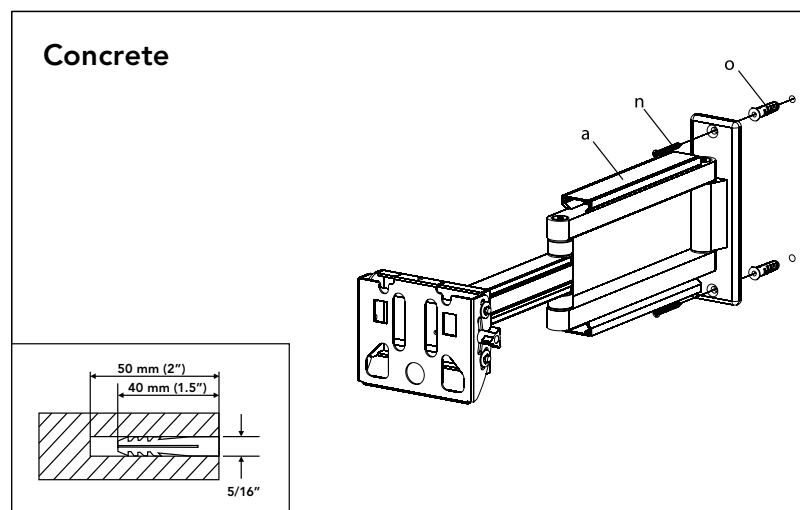
CAUTION

The wall you plan to use to affix the Kanto mount to must be able to support more than 5 times the weight of the television and the wall mount combined. Do not use this product for any purpose other than to mount a flat panel TV on a vertical surface as outlined in this manual. Improper installation may cause damage to your TV or serious injury. This product should NOT be mounted on steel stud walls or old or weak cinder block walls. Consult a qualified installation contractor if you are unsure about the type of wall you may have.

Step 1: Mounting the Wall Plate

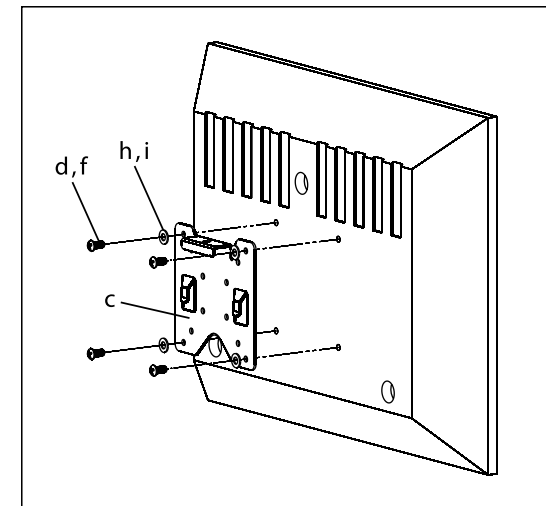


CAUTION
 Make sure the supporting surface will support the load limits outlined in the opening paragraph. The layer of wall material (i.e. drywall) may not exceed 5/8 inch in thickness. Do not over tighten Lag Bolts. Tighten lag bolts until Wall Plate is a snug flat against the wall. Each lag bolt must be located in the center of a wood stud (use an awl or thin nail for locating the stud edges to determine the center).

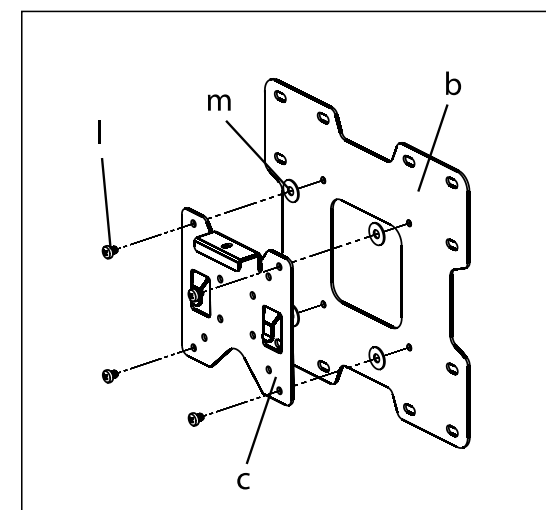


CAUTION
 Make sure the brick or cinder block is at least 1 3/8 inch thick. Do not drill into mortar joints. Do not over tighten Lag Bolts. Tighten lag bolts until Wall Plate is a snug flat against the wall. Make sure the anchor is seated completely flush with the concrete surface even if there is another layer of material, such as drywall. If drywall is over 5/8 inch thick custom lag bolts must be used. Concrete must be a minimum of 2000psi in density.

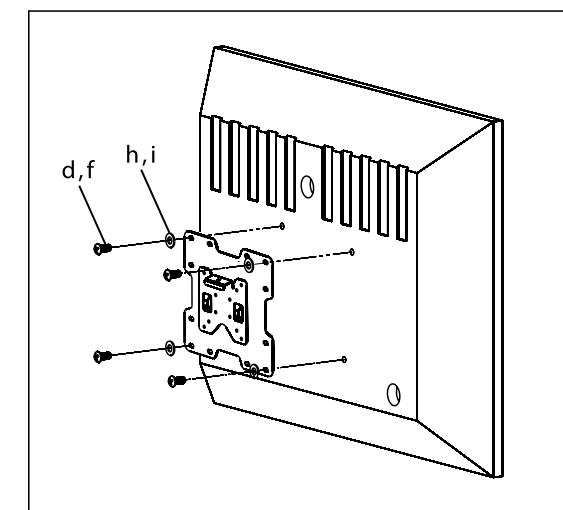
Step 2: VESA Size



VESA 75 x 75 or 100 x 100



VESA 100 x 200 or 200 x 200



WARNING
 Do not lay the TV face down on its glass front. Use a wall or a TV stand, if the TV came with one.